



FINAL INSTRUCTIONS

The Honolulu Marathon Association welcomes you to the **2018 Hapalua - Hawaii's Half Marathon**. Please read and follow our final instructions so that you have a safe and enjoyable run.

SHUTTLE SERVICE TO THE START

Depart Kapiolani Community College,
4303 Diamond Head Road from 3:30AM,
last bus leaves 5:30AM

FIRST CHASE GROUP START 5:36AM
LAST CHASE GROUP START 5:52AM

GENERAL MASS START 6:00AM

POST RACE FESTIVAL FROM 7:00AM

A bronze statue of a man, likely a surfer, holding a surfboard and a lei. The statue is positioned on the left side of the page. The background features large, curved shapes in shades of blue and green, creating a dynamic and modern aesthetic.

SUNDAY APRIL 8 2018

HAPALUA EXPO

A

ll registered runners **must** pick up their race packs at the **Hapalua Expo**, held at the Hawaii Convention Center.

The parking fee at the Convention Center parking lot is \$10.

Official Hapalua merchandise will be for sale at the Expo and our great vendors will have running related products and more on offer.

🕒 OPENING TIMES:

Friday, April 6

10:00AM - 8:00PM

Saturday, April 7

9:00AM - 4:00PM

EXHIBITORS

JAL
Sato Pharmaceuticals
Lanikai Juice RunClub
ASC Photos
Phiten
Oakley Sunglasses
Edison Co

Runners Route
Nutrex
Green Tea Hawaii
Sports Fly
Bondi Bands
Takefumi Hawaii
LornaJane

PACKET PICK UP

- 📍 Packets will contain your race BIB number, pins, commemorative T-shirt, and a complimentary Hapalua bag.
- 📍 Packets will not be mailed. Packets will not be given out on Race Day.
- 📍 Please bring your photo ID.
- 📍 The Expo is free and open to the public, so bring your friends and family.

If you missed the online registration, you will be able to sign up for the Half Marathon at packet-pick up. The late entry fee is \$180.



Location:

**Hawaii Convention Center
Ballroom A, 4th Floor**

1801 Kalakaua Ave, Honolulu, HI 96815

RACE WEEK AT A GLANCE



All registered runners must pick up their race packs at the Hapalua Expo.

FRIDAY APR 6

10:00AM - 8:00PM

Hapalua Expo at the Hawaii Convention Center

SATURDAY APR 7

8:00AM - 9:00AM

Social Run and meet & greet with Team Hawaii and the professional Chasers
Meet at the Bandstand, Kapiolani Park

9:00AM - 4:00PM

Hapalua Expo at the Hawaii Convention Center

SUNDAY APR 8

3:30AM

First shuttle leaves from Kapiolani Community College, 4303 Diamond Head Road

5:30AM

Last shuttle leaves from Kapiolani Community College, 4303 Diamond Head Road

6:00AM

START of the Hapalua Half Marathon

7:45AM

Post race entertainment starts on the main stage at the finishers village

9:30AM

Awards Ceremony on the main stage at the finishers village

POST RACE SHUTTLES

9:00AM

First shuttle leaving Kapiolani Park to Kapiolani Community College

11:00AM

Last shuttle leaving Kapiolani Park to Kapiolani Community College

PERSONAL SERVICES

GETTING TO THE START

FREE SHUTTLE SERVICE TO THE START FROM KAPIOLANI COMMUNITY COLLEGE

A FREE shuttle service will run from **3:30 AM to 5:30 AM** from Kapiolani Community College, parking lots A, B, C, & D.

The entrance to Lot A is located near the intersection of Makapuu Road & Kilauea Avenue.

The entrance to Lot D is located near the entrance of Kilauea Avenue & 18th Avenue.

The entrance to parking Lot C and Parking Lot B is at 4303 Diamond Head Road.

Post race shuttles will run from **9:00 AM** to approximately **11:00 AM** leaving Kapiolani Park (at the bus stop located on Monsarrat Avenue mauka of the Waikiki Bandstand) to go back to the KCC parking lots.

Limited event parking will be available at the Kapiolani Park lot in front of the Waikiki Shell and at the lot on the corner of Monsarrat Avenue and Paki Avenue. Parking is on a first come first serve basis.

Carpooling is recommended.

CLOTHING – BAG DROP

A clothing only check-in tent will be available in the finisher village near the finisher food court on race morning from 4:00AM to 10:30AM.

You can get the official clothing bag at packet pick up.

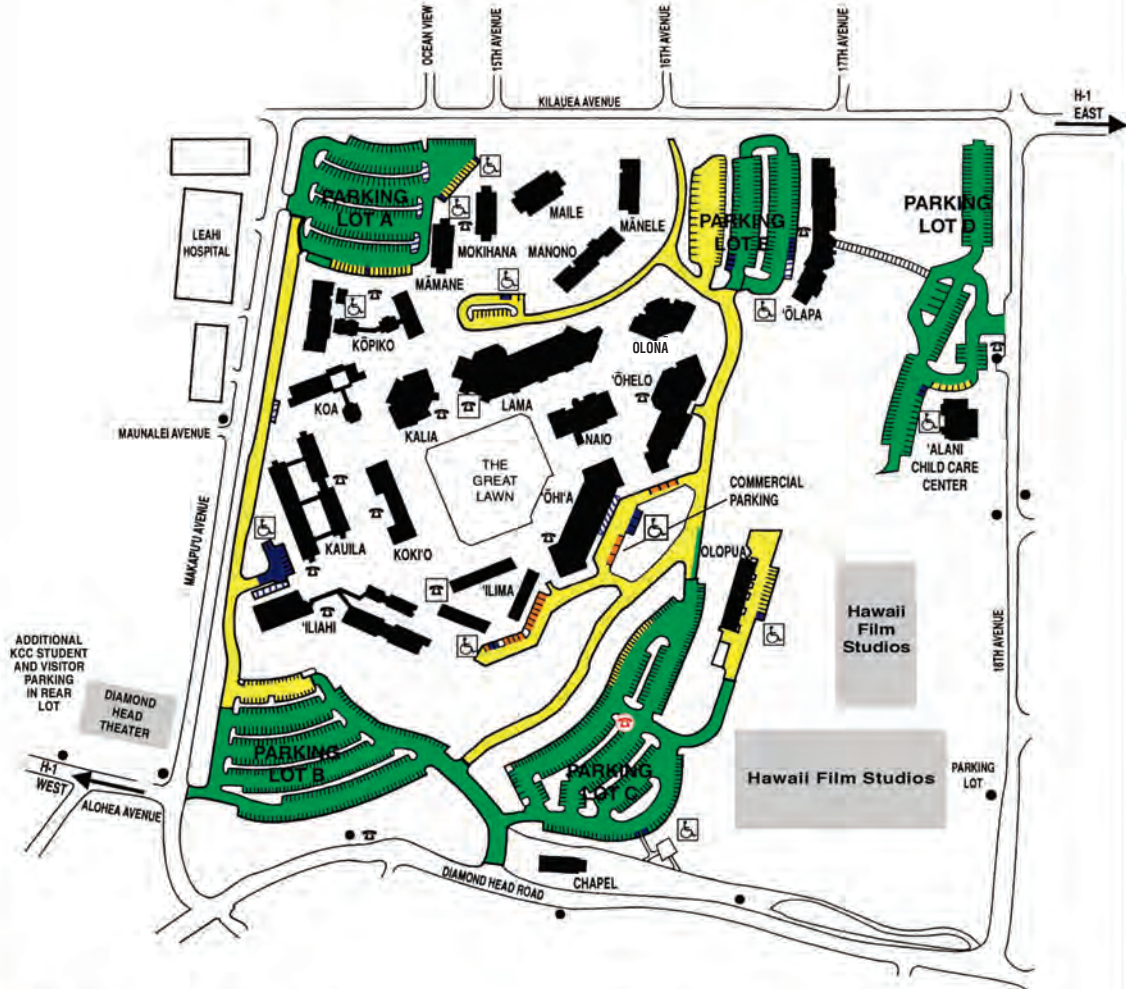
Clothing only, please -- do not leave any valuables. We cannot assume responsibility for items dropped off at this tent.

Bags not picked up by 10:30AM will be donated to charity.



DON'T WAIT FOR THE LAST BUS, there may not be room for you. This may cause you to be late for the start. Don't take a chance! Board the bus early. Non-runners will be accommodated on a space available basis.

Kapi'olani Community College



- Handicap Parking
- Staff Parking
(Mon-Fri, 6:00 am to 4:00 pm)
- Visitor with Permit Parking
(Mon-Fri, 6:00 am to 4:00 pm)
- Student and Visitor Parking
(No permit required)
- Motorcycle, Moped Parking
- Bus Stops
- ☎ Emergency Phone
- ☎ Pay Phones
- ☎ TDD Pay Phones

Cars parked at red curbs will be towed!!!

**Permits required for Lot A Parking
(Mon-Fri, 6:00 am to 4:00 pm)**

SAFETY

Inadequate training, failure to pace and disregard for the importance of taking fluids have resulted in life-threatening conditions such as heat stroke in both experienced and first-time road race participants. If this is your first road race experience or first experience in a warm, humid climate, take fluids at each of our aid stations.

Should you begin to experience difficulties, stop and ask for assistance from Aid Station personnel before continuing.

**WHEELCHAIRS MAY BE ON
THE COURSE. PLEASE
WATCH OUT**

VEHICULAR TRAFFIC

In order to minimize disruption to the community, we may be required by the Honolulu Police Department (HPD) to intermittently stop participants to allow vehicular traffic at the following intersections:

- 1-Hobron Lane and Ala Moana Blvd.
- 2-Ena Rd. and Ala Moana Blvd.
- 3-Saratoga Rd. and Kalakaua Ave.

Please cooperate with the instructions of our Course Marshals and HPD.

We apologize in advance for the inconvenience.

CHILD SAFETY

If your child will be participating in the event, please keep the child with you at all times.

Do not leave your child with non-family race participants, or allow your child to complete the race unescorted.

Strollers are allowed. For safety reasons we ask that you stage toward the rear of the starting field.

“ **DO NOT ALLOW YOUR
CHILD TO COMPLETE
THE RACE UNESCORTED**



THE START

Start time is 6:00 AM. Please stage as directed by the start line announcer at the Duke Kahanamoku statue on Kalakaua Avenue.

You must cross the start sensor mat to have your chip-time recorded properly.



Notice:

**Start time is at
6:00AM.**



AID STATIONS

Aid Stations: Providing, water, Gatorade, energy gel (mile 9) and Satohap spray.

Portable toilets: Located at the Start, Miles 1.5, 5, 9, 11 and at the finish line.

Medical Aid will be available at Miles 4, 9, 11 and at the finish line.

There will be course entertainment to cheer you on!

Please see the Course Map on www.thehapalua.com.



THE FINISH

The finish is on Kalakaua Avenue in Kapiolani Park. Collect your finisher medal and hang out in the finisher village with friends and family.

You can watch your finish on the big screen, enjoy the freshly made malasadas, shave-ice, bananas and pineapple juice from LanikaiJuice. There will be live music on the main stage featuring Henry Kapono. The finish times of all participants will be recorded until the last person has completed the race.

FINISH PHOTOGRAPHY

Be sure to keep your running number visible so we can identify your photos. Remember to look up as you cross the finish line - and show your winning smile!

“ **BE COURTEOUS
AND MAKE ROOM
FOR OTHER FINISHERS**



FINISHER CERTIFICATES

Finisher certificates will be available to download from www.thehapalua.com. Certificates will not be handed out or mailed.

FINISH RESULTS

Race results will be posted at the park and will be available on www.thehapalua.com.

AFTER THE FINISH

Post race at the park will be a festive time with entertainment, refreshments and shared experiences.

AWARDS

Post race entertainment will begin on the main stage in the finisher village at **7:45 AM**.
Awards will be presented at **9:30 AM**.



AWARDS WILL NOT BE MAILED.

REFRESHMENTS

- Malasadas
- Snacks
- Gatorade
- Bananas
- Shave ice
- Water

Available in the park.





ENTERTAINMENT

April 6th Hawai'i Convention Center 5:00-7:00 PM
 April 7th Hawai'i Convention Center 10:30 AM-1:30 PM

~ Featured Hawaiian Music & Dance ~

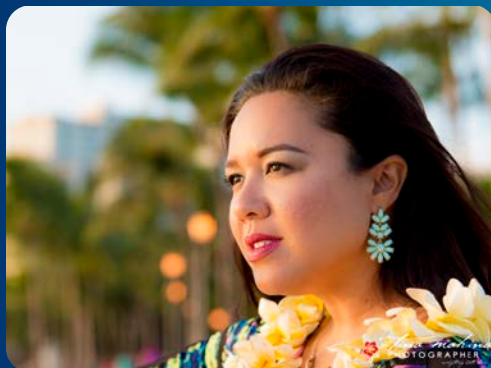
April 8th Hapalua Starting Line 5:30 AM (approx.)
 ★ Blessing by Kahu Hailama Farden
 ★ The Star Spangled Banner & Hawai'i Pono'i performed by 11 year old Sabia Farag

April 8th Diamond Head Triangle Park 7:15 -9:15 AM
 ★ Featured Hawaiian Music and Dance

April 8th Kapi`olani Park
 Multiple Nā Hōkū Hanohano Award Winners
 Henry Kaponu and Mailani Makainai.

7:45 - 8:30 AM

8:45-9:30 AM



Mailani



Henry Kaponu

Award ceremony to follow.



Hapalua
 Hawai'i's Half
 Marathon

April 8, 2018
 6:00 AM

Start:
 Waikīkī Beach

Finish:
 Kapi`olani Park

Distance:
 13.1 miles – Half
 Marathon

RULES OF THE EVENT

R

unners must wear their MYLAPS BibTag throughout the race, according to the instructions in the race packet.

REMEMBER:

NO BIBTAG

=

NO RESULT

=

NO CERTIFICATE

RUNNING NUMBER

The MYLAPS BibTag must be positioned front top center throughout the entire race. The number **MUST** be visible at all times. Running numbers are not transferable. You and the runner wearing your number will be disqualified from this race and future races organized by the Honolulu Marathon Association.

BIBTAGS CANNOT BE PICKED UP ON RACE DAY.

- ⊘ Do not cut or fold your bib number in any way
- ⊘ Do not deface your bib number with stickers, markings or any writing
- ⊘ Use a pin for each corner of the bib number; do not pierce the tag
- ⊘ Do not remove the foam spacer

UNOFFICIAL RUNNERS

Runners without an official race number will not be allowed to cross the finish line.

PROTESTS

Protests concerning the result or conduct of this race shall be made to the Referee in writing within one hour of the alleged infraction. We will not respond to verbal protests. All decisions of the Race Committee are binding. This race is conducted according to Competition Rules of USA Track & Field.

NO UNAUTHORIZED VEHICLES:

No unauthorized vehicles including in-line skates, roller skates, skate boards, bicycles will be allowed on the course.

CHECKPOINTS:

You must cross the sensor mats at check points along the course. Make sure your running number is clearly visible. You may be disqualified if there is no record of you passing through the checkpoints.



#HAPALUA #HAPALUA2018

 **Follow us on Twitter**
@TheHapalua

 **Like us on Facebook**
thehapalua

 **Follow us on Instagram**
hapalua_hawaii_half_marathon



The 2019 Hapalua will be held on
Sunday April 14.

For more information, please visit
www.thehapalua.com

The 2018 Honolulu Marathon will be
held on Sunday December 9.

For more information, please visit
www.honolulumarathon.org



JAPAN AIRLINES



OUTRIGGER.
RESORTS